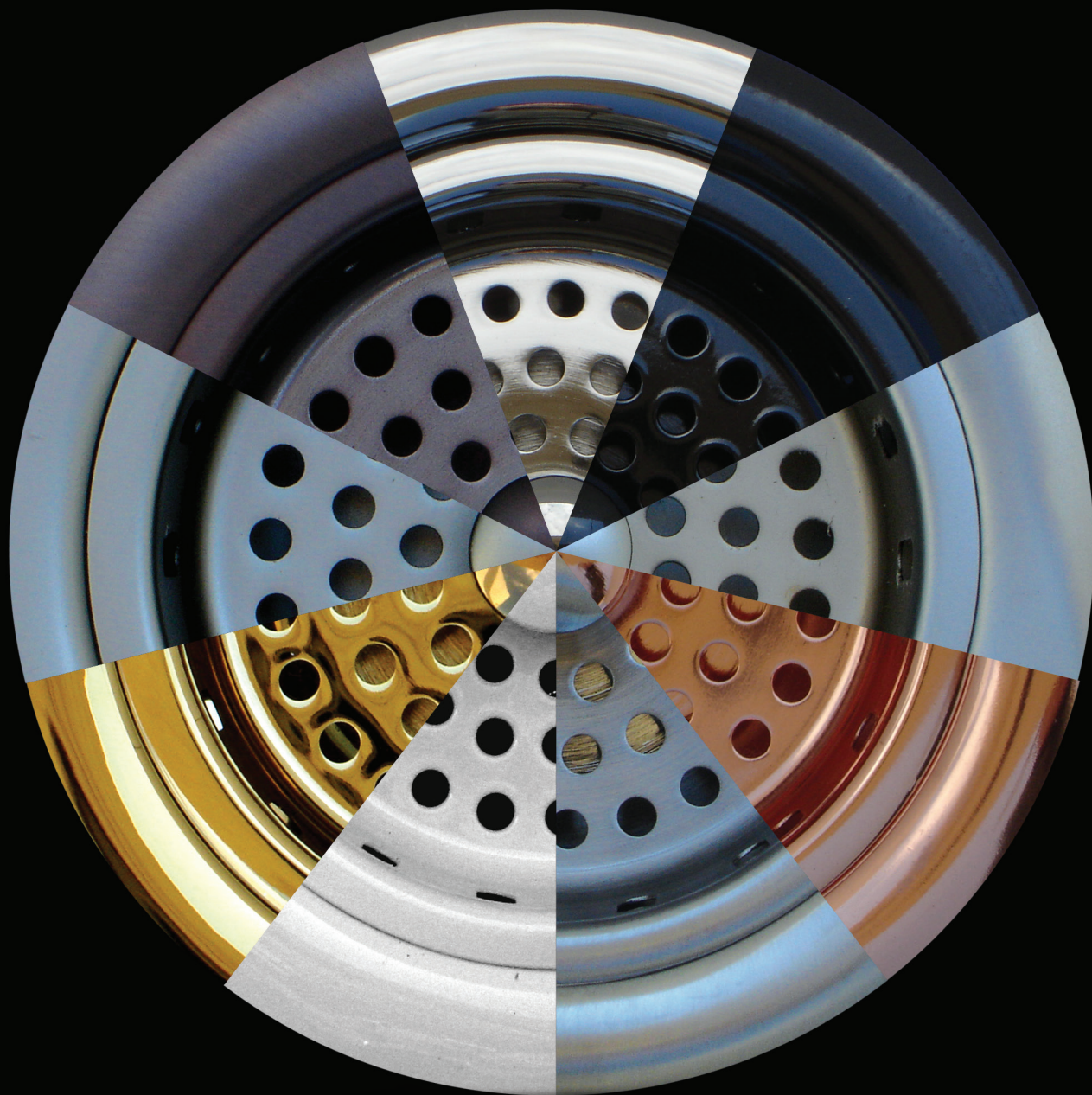


WATERNITY®



IV

### BATH.....7-26

Tank Levers, Cable Drains, Tub Spouts and Grab Bars .....	7-8
Lavatory Drains .....	9
Tub Drains, Faceplates and Bath Waste Kits .....	10-16
Strainers and Shower Drains .....	16-17
Shower Arms, Flanges and Shower Heads .....	18-19
Tub and Shower Trim Kits .....	20
Deep Box Flanges and Extensions .....	21
Lavatory Traps and Flanges .....	22
Supply Kits and Components .....	23-26

### KITCHEN .....27-31

Sink Accessories .....	27
Designer Series Disposal/Sink Drains .....	28
Disposal/Sink Drains .....	29-31



**WPD**  
Product Display

35" Height  
23" Width  
12" Depth

Can be wall hung  
or table top.

**WCK**  
Color Keychain



**WCD**  
Color Display



**Freight Allowance:** Please call for FFA. **Minimum Orders:** None. **Billing Terms:** 2% 10th, Net 30 Days or 3% 10 Days, Net 30 Days Claims: Must be made within 5 days after receipt of goods. Returns: All returns are subject to a 30% re-stocking fee, plus prior authorization is required. Returned goods must have RGA#. Special plated/ordered items cannot be returned. **Pricing:** Please refer to the separate list price grid for current pricing and available finishes for each item. Prices are subject to change without notice.

# WATERNITY® PICTORIAL INDEX

7 	8 	8 	8 	9 
10 	10 	11 	12 	13 
14 	16 	16 	17 	18 
19 	19 	20 	21 	22 
23 	24 	25 	26 	26 
27 	27 	27 	27 	27 
27 	29 	29 	30 	31 



# WATERNITY® COLOR CHART

## DISTRESSED FINISHES

**AB**

Aged Brass



**AC**

Aged Copper



**AP**

Aged Pewter



**OB**

Oil Rubbed Bronze  
(Venetian Bronze)



**ROB**

Rustic Oil Rubbed  
Bronze



## BRUSHED FINISHES

**SB**

Satin Bronze (PVD)



**SC**

Satin Chrome (PVD)



**SN**

Satin Nickel (PVD)



**SS**

Stainless Steel (PVD)



## POWDER COAT FINISHES

**AL**

Gloss Almond



**BI**

Gloss Biscuit



**BL**

Gloss Black



**FB**

Flat Black



**WH**

Gloss White



## POLISHED FINISHES - **NEW FINISH AVAILABLE, SEE PAGE 5**

**CP**

Chrome Plated



**PB**

Polished Brass (PVD)



**NP**

Polished Nickel (PVD)



## MATTE FINISHES

**PC**

Pearl Chrome (PVD)



**PN**

Pearl Nickel (PVD)



If you do not see the finish CALL US! We can plate over 40 different finishes!



# WATERNITY®

## FINISHES MATCHING CHART

Waternity is in no way stating our product is an exact match to the other listed manufacturers. This cross reference is intended to show our closest match only.

## NEW FINISH!

### INTRODUCING UNLAQUERED BRASS (RB)



	DISTRESSED FINISHES					BRUSHED FINISHES				MATTE FINISHES			POLISHED FINISH	
	(-AB) Aged Brass	(-AC) Aged Copper	(-AP) Aged Pewter	(-OB) Oil Rubbed Bronze	(-ROB) Rustic Oil Rubbed Bronze	(-SB) Satin Bronze PVD	(-SC) Satin Chrome PVD	(-SN) Satin Nickel PVD	(-SS) Stainless Steel PVD	(-PC) Pearl Chrome PVD	(-PN) Pearl Nickel PVD	(-FB) Flat Black	(-NP) Polished Nickel PVD	(-RB) Unlaquered Brass
ALSONS								Satin Nickel			Peral Nickel		Bright Nickel	
ALTMANS								Satin Nickel			Matte Nickel		Polished Nickel	
AMERICAN ST.		Oil Rubbed Bronze (Z24)		Blackened Bronze				Satin Nickel	Stainless Steel (075)	285				
CIFIAL	Aged Brass (V05)	Distressed Bronze	Distressed Nickel (D20)	Weathered (W30)				Satin Nickel (620)					Polished Nickel (721)	
DANZE		Tumbled Bronze (BR), Distressed Bronze (RBD)	Distressed Nickel (DN)	Oil Rubbed Bronze (RB)				Brushed Nickel (BN)				Satin Black (BS)	Polished Nickel (PNV)	
DELTA			Aged Pewter (PT)	Venetian Bronze (RB)	Oil Rubbed Bronze (OB)	Champagne Bronze (CZ)		Brushed Nickel (BN)	Stainless (SS)	Matte Chrome (MC)	Pearl Nickel (NN)	Matte Black (BL)	Polished Nickel (PN)	
DORNBRACHT							Satin Chrome	Matte Platinum				Matte Black	Platinum	
GROHE								Brushed Nickel (END)	Stainless Steel (SD0)	Velour Chrome	Infinity (AVO)	Soft Black	BE0	
HANSGROHE							Satin Chrome	Brushed Nickel (82)			Satinox (81)		Polished Nickel	
KALLISTA				Antique Bronze (BZ)				Brushed Nickel (AG)					Nickel Silver	
KOHLER				Oil Rubbed Bronze (2BZ)	Rubbed Bronze (BRZ)	Brushed Bronze (BV)	Brushed Chrome (G)	Brushed Nickel (BN)				Satin Black (TB)	Polished Nickel (SN)	
MOEN	Antique Bronze (AZ)	Oil Rubbed Bronze (ORB)	Pewter (PW), Antique Nickel (AN)	Mediterra- nean Bronze (BRB)		Brushed Bronze (BB)		Brushed Nickel (BN)		Platinum (PM)	Satine (ST)	Wrought Iron (WR)	Nickel (NL)	
NEWPORT BRASS				Venetian Bronze (VB)		Satin Bronze (10)	Satin Chrome (26D)	Satin Nickel (15S)	Stainless (20)			Flat Black (56)	Polished Nickel (15)	
PHYLRICH							Satin Chrome	Satin Nickel					Polished Nickel	
PRICE PFISTER		Rustic Bronze (U)	Rustic Pewter (E)	Tuscan Bronze (Y)				Brushed Nickel (K)				Black		
SANTEC							Satin Chrome (15)	Satin Nickel (75)		Chrome Frost (17)	Nickel Frost (77)	Wrot Iron (91)	Polished Nickel (70)	

**Limited Lifetime Warranty:** Waternity will provide free of charge, at its option, replacement part(s) or product (or a comparable alternative product) to replace those which have proven defective in materials or workmanship for the life of the product. Waternity will not cover labor expended or damages accruing from the use of our products. If material is defective, the limit of damage is the price of the defective material. Proof of purchase (original sales receipt) from the original consumer purchaser must be made available to Waternity

for all warranty claims. The warranty is not transferable and is extended solely to the original purchaser of the product. **Harsh and abrasive chemicals, cleaners and plumbers putty used on our products will void the warranty. Finishes are not dishwasher safe.** This warranty is for normal domestic use only and excludes defect or injury caused by or resulting from misuse, abuse, neglect, accidental damage, or improper installation. Please refer to the Braxton Harris catalog for the Braxton Harris product warranty.

**Care & Cleaning Instructions for your Decorative Products:** NEVER use harsh alkali or acid-based detergents, abrasive polishes or scouring cleansers when cleaning the decorative products. Also do not use any S.O.S. or Scotch Brite Pads. These are scouring tools and will scratch our decorative finish - it covers no limit to Chrome, lacquer, PVD or others. This cleaning method fits all plumbing fixtures regardless of the material and finish, even stainless can be scratched and colored plastic will develop a dull finish. Do not leave coffee or vinegar laying in bottom of sink basin or on any products. After use, please wipe your product dry with a clean soft cloth. Wiping is important as it will limit water spotting. To clean, just wipe with a damp cloth, and dry with a soft cloth. If necessary, regular Windex can be used. Note: Improper care or misuse will void any warranty claims.

**Copyright:** The contents and design of this catalog are copyrighted. Reproduction of images or text in this catalog is prohibited without prior written consent from Waternity. Waternity is a division of Braxton Harris Company, Inc.

# WATERNITY® CROSS REFERENCE CHARTS

## FINISH MATCHING CHART

Waternity is in no way stating our product is an exact match to the other listed manufacturers. This cross reference is intended to show our closest match only.

WATERNITY	JACLO	MOUNTAIN
Satin Nickel (SN)	Satin Nickel (SN)	Brushed Nickel (BRN & PVDBRN)
Oil Rubbed Bronze (OB)	Vintage Bronze (VB)	Venetian Bronze (VB)
Satin Bronze (SB)	Bronze Umber (BU)	Brushed Bronze (PVDDBB)
Stainless Steel (SS)		Brushed Stainless Steel (BRS)/ Stainless Steel (SS)
Polished Nickel (NP)	Polished Nickel (PN)	Polished Nickel (PN & PVDPN)
Flat Black (FB)	Matte Black (MBK)	Matte Black (MB)
Copper (CO)	Polished Copper (PCU)	Polished Copper (PCP)
Antique Copper (ANC)	Antique Copper (ACU)	Antique Copper (ACP)
Antique Brass (ANB)	Antique Brass (AB)	Antique Brass (AB)
Satin Chrome (SC)	Satin Chrome (SC)	Satin Chrome (SC)
Weathered Copper (WCP)		Weathered Copper (WC)
Chrome Plated (CP)	Polished Chrome (PCH)	Polished Chrome (CPB)
Polished Brass (PB)	Polished Brass (PB)	Polished Brass (PVD)
White (WH)	White (WH)	White (WH)
Biscuit (BI)	Sedona Beige (SDB)	Bone (BNE)
Unlaquered Brass (RB)	Unlaquered Brass (ULB)	Unlaquered Brass (ULB)

## PRODUCT MATCHING CHART

Waternity is in no way stating our product is an exact match to the other listed manufacturers. This cross reference is intended to show our closest match only.

WATERNITY	JACLO	MOUNTAIN	WATERNITY	JACLO	MOUNTAIN	WATERNITY	JACLO	MOUNTAIN	WATERNITY	JACLO	MOUNTAIN
AS058-038Q	621-25-8		DBSDES		SR9202G1	PFTWHKK		BDWUNDISCP	SSKC12-038-200X	591X-62	MT484X-NL
AS058-038QX	621-25	MT621-NL	DJDBS	2826	MT710	POPBLTNF		MT760	SSKL058-038-200X		
AS12-038Q	616-25-8		DTSND	2040/2041		POPBLTF		MT750	SSKL12-038-200X		MT3842-NL
AS12-038QX	616-25	MT616-NL	FHC2	2820		PU114NF	819	MT742	SLD114NF	826	MT780
ASB	2828	MT955	FSS02	86562	MT229P	PU114F-		MT741	SLDS114NF	827	MT770
ASBS	2830		FTD112	558		PUA	736		SS058-038Q	622-25-8	
ASK		MT951	FTD114	548		PUAF	83694		SS058-038QX	622-25	MT622-NL
ASKS		MT952	FLD114NF		MT743	PUANF	83994	MT738-3	SS12-038Q	619-25-8	
BBTR114	255	MT2000-2	FLD114F		MT743-3	RSHD10	S187		SS12-038QX	619-25	MT619-NL
BBTS114		MT3000	GBCB114-18	2618	MT96TDGRS	RSHD6	S183		TFAK	9444	
BDS02-3	86563		GDFDSKM	2819		RSHD8	S185		TL8		MT9404
BDS02-3S	86564		GDFDSKM2		MT202	RSHDS10	S310		TL8N	9179	MT9379
BETE0114-12	413		GDFSKM	2815	MT204	RSHDS12	S312		TLASS	928	MT2021
BLTW	357	BDWUNLT16	GDFSKM2	2827	MT200EV	RSHR10	S210		TLKRO	946	
BLTWLT		BDLTCFT22	GDSM	2817	BWDS6818	RSHR12	S212		TLT		MT904
BPT112D	253	MT3140	GDFM		MT205	RSHS10	S211		TLT2		MT968
BPT114D	251	MT3130	JDBS	2801	MT700	RSHS12	S213		TLT3		MT961
BPT112CC	262		LPF058		MT441X	RSSC338	6264		TLT4	9141	MT9141
BPT114		MT301X	LPF12		MT442X	RSSI	6245	MT245	TLWT	520	
BPT112		MT302X	LPF112	749		RSSI338-414	6238		TTD	529	
BST112	2206		LTD112	538		RSSI338		MT238	TTDM	530	
BST114	2204		LTWT	542	HTRLT	RSSS	6236	MT236	TTMWT	537	
BTLW	349		LTWT1	540		SA12-6	8031		TTSD	532	
BTTMW	353-537	BDWUNV16	MLD114NF	832		SA12-8	8032		TTSWT	539	
BTTSW	353-539	BDWSQ	MLDS114NF	833		SARC12-12	8079		TTSWT112-114		BDSQTRIM
BTTW	353		MLD114CNF		MT745-2	SARS12-17	8076		TTWT	535	MT94
CD	370		NCSD2	86560		SAS12-10	8038		TTWT1	531	
CDT	508	TRIMM3	OFF	502		SBD	518		TLD114NF	6611	
CLD114	810		OFFP1	501		SKC12-038-200XN	586X-62	MT483BX-NL	TLD114F	660	
CLD114F		MT734	OFFC	513		SKC12-038-200X	586X-62	MT483BX-NL	TBN12-4		MT450X
CLD114NF	816	MT735	OFFSC	512		SKL12-038-200XN		MT3842-NL			
DBF0112	767		OFFTL	503		SKL12-038-200X		MT3842-NL			
DBF0114	766		PLTWHK1	536		SKL058-038-200X	622-25-8-62	MT493BX-NL			
DBSD	2807	MT300	PLTWHK2K		BDWPLTA	SKL058-038-200XN	621-25-62	MT493BX-NL			
DBS		BWSTU	PTTWHK2K		BDWPPTTP	SKC058-038-200X		MT482BX-NL			
DBSM	2806		PTTSWHKK		BDWSQP	SSKC058-038-200XN		MT484X-NL			
DBSMRB	2803		PTTMWHKK		BDWUNVP	SSKC12-038-200XN	591X-62	MT484X-NL			



# TANK LEVERS

WATERNITY®

## BATHROOM

### KOHLER\*

TL8 Fits: Older Wellworth and Highline  
(pre-2011)  
Replaces: 30324, K-9380-L



TL8 Kohler\* 45 degree angled with plastic arm and nut with brass handle.



TFAK Fits: Portrait,  
Revival & Serif  
Replaces: K-9446, 83725

**TFAK** Top mount flush actuator for Kohler\* toilets. All parts brass and plastic spud.

TL8N Fits New Wellworth (K-33948),  
Highline (K3713)  
Replaces Kohler K-9379, 1142713



**TL8N** Kohler\* 45 degree angled with plastic arm and nut with solid brass handle.

TLKRO Fits: Rialto (K-3402) &  
San Raphael (K-3397)  
Replaces: K-9419, 81609



**TLKRO** Kohler\* side mount with brass arm, spud and nut with brass handle.

TLKRN Fits: Rochelle (K-3385),  
Rialto (K-3386) &  
San Raphael (K-3384)  
Replaces: K-9415 (81610),  
K-9430 (85114, 76558)



**TLKRN** Kohler\* side mount with brass arm, spud and nut with brass handle.

### TOTO\*

Fits: Carlyle, Carolina, Supreme,  
Ultimate and Ultramax.  
Replaces: THU004



TLT

Fits: Bristol, Drake,  
Vespin & Gwyneth.  
Replaces: THU068



TLT2



TLT2N

**TLT** Toto\* side mount with straight brass arm.  
**TLTN** Same as above with new style handle.  
**TLT2** Toto\* side mount with pre-bent brass arm, plastic spud and nut with brass handle  
**TLT2N** Same as above with new style handle.

Fits: Caruso  
Replaces: THU061



TLT3



TLT3N

Fits: Carrollton, Dartmouth  
& Whitney  
Replaces: THU141



TLT4

**TLT3** Toto\* side mount with pre-bent brass arm, plastic spud and nut with brass handle  
**TLT3N** Same as above with new style handle.  
**TLT4** Toto\* side mount with pre-bent brass arm, brass spud and nut with brass handle

### STANDARD LEVERS



**TTL** Deluxe front mount tank lever with solid brass handle and arm. New design with no visible screw.



**TL1** Standard front mount with brass arm, metal spud and nut.



**TL1P** Standard front mount tank lever with brass arm, plastic spud and nut.



**TLU** Universal tank lever. Solid brass handle. Adjustable arm. Fits front and side mount on both right and left handed toilets. The patented design makes it the most versatile tank lever in the market!



**TLUM** Moderno™ universal tank lever. Functions the same as the TLU

### AMERICAN STANDARD\*



Fits: Heritage\* & Antiquity\*  
Replaces: 730283

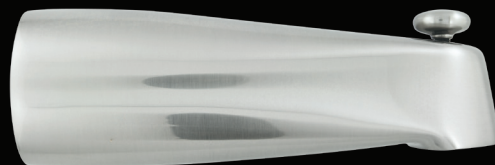
**TLASS** American Standard\* side mount tank lever. Also fits other side mount Porcher\*/American Standard\* toilets. All brass parts with plastic nut.

\*Manufacturer name listed is used only to describe whose products Waternity products will fit. They are not O.E.M. manufactured, licensed or endorsed by those manufacturers.

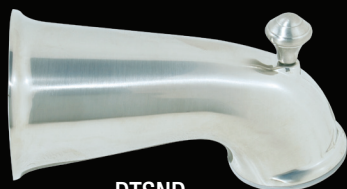
### BATH



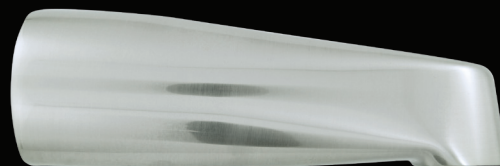
TSND



LTSND1



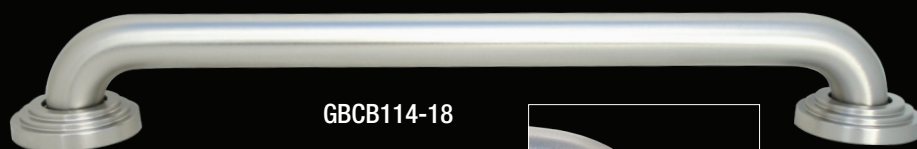
DTSND  
Comes with hex key,  
teflon tape and adapters.



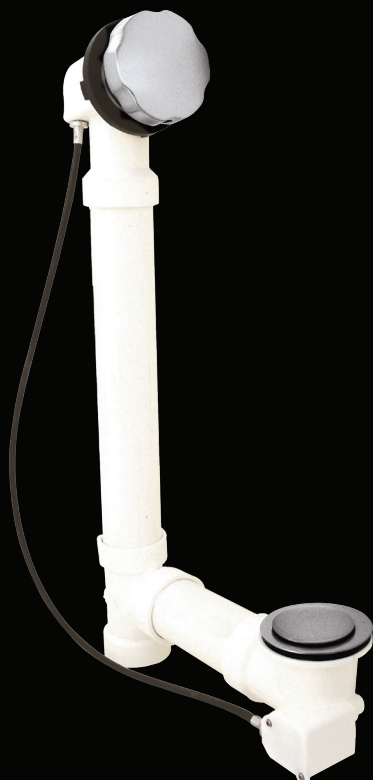
LTS01



TSR  
tub spout ring



GBCB114-18



CD/ CD45

PART #	DESCRIPTION
CD	1-1/2" PVC Schedule 40 cable drain w/ 27" cable
CD45	1-1/2" PVC Schedule 40 cable drain w/ 45" cable
CDT	Trim only for CD and CD45
DTSND	5" deluxe universal tub spout w/ nose diverter. Option of 1/2" IPS/CTS/PEX nose connection or 3/4" IPS, 1/2" IPS/CTS/PEX wall connection w/ adapter
TSND	5" tub spout w/ nose diverter. 1/2" IPS nose connection
TSR	Tub spout ring. Covers gaps in tile around a tub spout
LTSND1	9" heavy cast brass tub spout w/ nose diverter. 1/2" IPS nose connection. 7" length from wall to nose threads.
LTS01	9" heavy cast brass tub spout less diverter. 1/2" IPS nose connection. 7" length from wall to nose threads.
GBCB114-18	1-1/4" tubular x 18" length ADA compliant* grab bar. Brass tubular w/ heavy cast brass flanges.

\*When properly mounted



## TUBULAR LAVATORY DRAINS



CLD114  
CLD114F  
CLD114NF



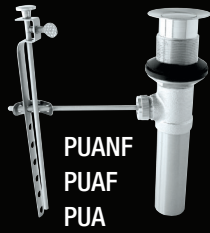
FLD114F  
FLD114NF



MLD114F  
MLD114NF  
MLDS114F  
MLDS114NF



POPBLT  
POPBLTF  
POPBLTNF



PUANF  
PUAF  
PUA



PU114F  
PU114NF



SLD114F  
SLD114NF  
SLDS114F  
SLDS114NF



TLD114F  
TLD114NF



HSLD114  
HSLD114F  
HSLD114NF

PART #	DRAIN STYLE	OVERFLOW	STOPS WATER	FINISHED PARTS	FITS SINKS	THREAD LENGTH	TAILPIECE LENGTH	OVERALL LENGTH	GAUGE
CLD114	Commerical Grid	YES	NO	TOP	1" to 2-1/4"	2.5"	5.75"	8.25"	17
CLD114F	Commerical Grid	YES	NO	ALL	1" to 3-1/2"	4"	8"	12"	17
CLD114NF	Commerical Grid	NO	NO	ALL	0" to 3-1/2"	4"	8"	12"	17
FLD114F	Flip	YES	YES	ALL	0" to 3-1/2"	4"	8"	12"	17
FLD114NF	Flip	NO	YES	ALL	0" to 3-1/2"	4"	8"	12"	17
MLD114F	Mushroom	YES	YES	ALL	0" to 3-1/2"	4"	8"	12"	17
MLD114NF	Mushroom	NO	YES	ALL	0" to 3-1/2"	4"	8"	12"	17
MLDS114F	Mushroom (Stationary)	YES	NO	ALL	0" to 3-1/2"	4"	8"	12"	17
MLDS114NF	Mushroom (Stationary)	NO	NO	ALL	0" to 3-1/2"	4"	8"	12"	17
POPBLT	PO Lift And Turn	YES	YES	TOP	1/2" to 3-1/2"	3.25"	7.5"	7.5"	17
POPBLTF	PO Lift And Turn	YES	YES	ALL	1/2" to 3-1/2"	4"	8"	12"	17
POPBLTNF	PO Lift And Turn	NO	YES	ALL	1/2" to 3-1/2"	4"	8"	12"	17
PUA	Pop Up Assembly	YES	YES	TOP	1" to 2-1/4"	2.5"	5.75"	8"	17
PUAF	Pop Up Assembly	YES	YES	ALL	1" to 3-1/2"	2.75"	8"	8"	17
PUANF	Pop Up Assembly	NO	YES	ALL	1" to 3-1/2"	2.75"	8"	8"	17
PU114F	Pop Up	YES	YES	ALL	0" to 3-1/2"	4"	8"	12"	17
PU114NF	Pop Up	NO	YES	ALL	0" to 3-1/2"	4"	8"	12"	17
SLD114F	Square	YES	YES	ALL	0" to 3-1/2"	4"	8"	12"	17
SLD114NF	Square	NO	YES	ALL	0" to 3-1/2"	4"	8"	12"	17
SLDS114F	Square (Stationary)	YES	NO	ALL	0" to 3-1/2"	4"	8"	12"	17
SLDS114NF	Square (Stationary)	NO	NO	ALL	0" to 3-1/2"	4"	8"	12"	17
TLD114F	Tear Drop	YES	NO	ALL	0" to 3-1/2"	4"	8"	12"	17
TLD114NF	Tear Drop	NO	NO	ALL	0" to 3-1/2"	4"	8"	12"	17
HSLD114	Offset Commercial Grid	YES	NO	TOP	1" to 2-1/4"	2.5"	8"	12"	17
HSLD114F	Offset Commercial Grid	YES	NO	ALL	0" to 3-1/2"	4"	8"	12"	17
HSLD114NF	Offset Commercial Grid	NO	NO	ALL	0" to 3-1/2"	4"	8"	12"	17

## BATH WASTE TRIM

PART#	STYLE OF OPERATION	DRAIN SIZE/THREADS	WITH 1-1/2"x1-1/4" BRASS CONVERSION BUSHING (TDB112-114)
FTD112	Flip	1-1/2" / Coarse	No
FTD114	Flip	1-1/4" / Fine	No
FTD114-112	Flip	1-1/2"x1-1/4" / Coarse x Fine	Yes
LTD112	Lift and turn	1-1/2" / Coarse	No
LTD114	Lift and turn	1-1/4" / Fine	No
LTD114-112	Lift and turn	1-1/2"x1-1/4" / Coarse x Fine	Yes
TTD	Toe touch	1-1/2" / Coarse	No
TTD114	Toe touch	1-1/4" / Fine	No
TTD114-112	Toe touch	1-1/2"x1-1/4" / Coarse x Fine	Yes
TTMD112	Mushroom toe touch	1-1/2" / Coarse	No
TTMD114	Mushroom toe touch	1-1/4" / Fine	No
TTMD114-112	Mushroom toe touch	1-1/2"x1-1/4" / Coarse x Fine	Yes
TTSD112	Square toe touch	1-1/2" / Coarse	No
TTSD114	Square toe touch	1-1/4" / Fine	No
TTSD114-112	Square toe touch	1-1/2"x1-1/4" / Coarse x Fine	Yes
SBD	Gerber style strainer	1-1/2" / Coarse	No
SBD114	Gerber style strainer	1-1/4" / Fine	No
SBD114-112	Gerber style strainer	1-1/2"x1-1/4" / Coarse x Fine	Yes

All drains made of heavy cast brass.

1-1/4" drain thread is the equivalent to 1-3/8"



FTD112/FTD114/FTD114-112



LTD112/LTD114/LTD114-112



TTD/TTD114/TTD114-112



TTMD112/TTMD114 TTMD114-112



TTSD112/TTSD114/  
TTSD114-112



SBD/SBD114/SBD114-112

## OVERFLOW FACE PLATES

PART#	DESCRIPTION
OFFP	Round two hole w/ screws
OFFP1	Round one hole w/ screw
OFFPC	Round concealed w/ conversion bar
OFFPSC	Square concealed w/ conversion bar
OFFPTL	Round trip lever w/ screws
OFFPCB	Overflow 2 to 1 hole conversion bar w/screws
OFFPS	Screw for overflow face plate

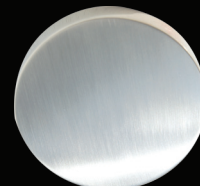
All face plates come with necessary screws



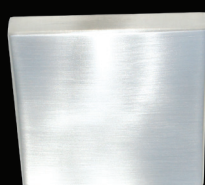
OFFP



OFFP1



OFFPC



OFFPSC



OFFPTL



OFFPCB



## BATH WASTE TRIM



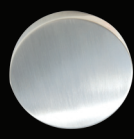
LTWT/LTWT112-114



LTWT1/LTWT112-114-1



FTWT/FTWT112-114



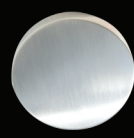
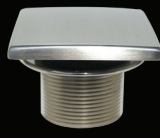
TTWT/TTWT112-114



TTSWT/TTSWT112-114-1



TTMWT/TTMWT112-114



TLWT/TLWT112-114



TLWT/TLWT112-114

PART #	STYLE DRAIN	STYLE FACEPLATE	1 TO 2 HOLE CONVERSION BAR	1-1/4"X1-1/2" BRASS CONVERSION BUSHING
LTWT	1-1/2" Lift and turn	2-hole round	No	No
LTWT112-114	1-1/2" x 1-1/4" Lift and turn	2-hole round	No	Yes
LTWT1	1-1/2" Lift and turn	1-hole round	Yes	No
LTWT112-114-1	1-1/2" x 1-1/4" Lift and turn	1-hole round	Yes	Yes
FTWT	1-1/2" Moderno™ flip	Concealed round	Yes	No
FTWT112-114	1-1/2" x 1-1/4" Moderno™ flip	Concealed round	Yes	Yes
TTWT	1-1/2" Toe touch	2-hole round	No	No
TTWT112-114	1-1/2" x 1-1/4" Toe touch	2-hole round	No	Yes
TTWT1	1-1/2" Toe touch	1-hole round	Yes	No
TTWT112-114-1	1-1/2" x 1-1/4" Toe touch	1-hole round	Yes	Yes
TTSWT	1-1/2" Moderno™ square toe touch	Concealed square	Yes	No
TTSWT112-114	1-1/2" x 1-1/4" Moderno™ square toe touch	Concealed square	Yes	Yes
TTMWT	1-1/2" Moderno™ mushroom	Concealed round	Yes	No
TTMWT112-114	1-1/2" x 1-1/4" Moderno™ mushroom	Concealed round	Yes	Yes
TLWT	1-1/2" Gerber style	2-hole round trip lever	No	No
TLWT112-114	1-1/2" x 1-1/4" Gerber style	2-hole round trip lever	No	Yes

LTWT series and TTWT series come in clamshell packaging. For box add -BX. All others boxed standard.

All face plates come with necessary screws

All drains made of heavy cast brass

1-1/4" drain thread is the equivalent to 1-3/8"

## BATH WASTE KITS

&lt;&lt; CHOOSE YOUR ROUGH-IN

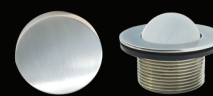
CHOOSE YOUR TRIM &gt;&gt;



LTWT



LTWT1



FTWT



BW40RK1/ BW40RK2

## DESCRIPTION

Sch 40 half kit

2-Hole/Lift &amp; Turn

PLTWHK2

1-Hole/Lift &amp; Turn

PLTWHK1

Concealed/Flip

PFTWHK

Sch 40 half kit w/ test

PLTWHK2K

PLTWHK1K



BW40DRK1/ BW40DRK2

Sch 40 half kit direct drain

PLTWDHK2

PLTWDHK1

PFTWDHK

Sch 40 half kit direct drain w/ test

PLTWDHK2K

PLTWDHK1K



BW40FRK1/ BW40FRK2

Sch 40 full bath waste

PLTW40

PLTW40-1

PFTW40

Sch 40 full bath waste w/ test

PLTW40K

PLTW40-1K



BWPFRK1/ BWPFRK2

Plastic tubular full bath waste

PLTW

PLTW1

PFTW



BWPFRK3

Plastic tubular above floor full bath waste

PLTAFW

PLTAFW1

PFTAFW



BWPFRK4

Plastic tubular shoe outlet full bath waste

PLTSOW

PLTSOW1

PFTSOW



BW17FRK/ BW17FRK2

Brass 17 gauge tubular full bath waste

BLTW

BLTW1

BFTW



				
<b>TTWT</b>	<b>TTWT1</b>	<b>TTSWT</b>	<b>TTMWT</b>	<b>TLWT</b>
2-Hole/Toe Touch	1-Hole/Toe Touch	Concealed/Squared	Concealed/Round	Trip/Gerber Style
<b>PTTWHK2</b>	<b>PTTWHK1</b>	<b>PTTSWHK</b>	<b>PTTMWHK</b>	
<b>PTTWHK2K</b>	<b>PTTWHK1K</b>	<b>PTTSWHKK</b>	<b>PTTMWHKK</b>	
<b>PTTWDHK2</b>	<b>PTTWDHK1</b>	<b>PTTSWDHK</b>	<b>PTTMWDHK</b>	
<b>PTTWDHK2K</b>	<b>PTTWDHK1K</b>	<b>PTTSWDHKK</b>	<b>PTTMWDHKK</b>	
<b>PTTW40</b>	<b>PTTW40-1</b>	<b>PTTSW40</b>	<b>PTTMW40</b>	
<b>PTTW40K</b>	<b>PTTW40-1K</b>	<b>PTTSW40K</b>	<b>PTTMW40K</b>	
<b>PTTW</b>	<b>PTTW1</b>	<b>PTTSW</b>	<b>PTTMW</b>	<b>PTLW</b> (w/ plunger #PLA)
<b>PTTAFW</b>	<b>PTTAFW1</b>	<b>PTTSAFW</b>	<b>PTTMAFW</b>	
<b>PTTSOW</b>	<b>PTTSOW1</b>	<b>PTTSSOW</b>	<b>PTTMSOW</b>	
<b>BTTW</b>	<b>BTTW1</b>	<b>BTTSW</b>	<b>BTTMW</b>	<b>BTBW</b> (w/ plunger #BLA)



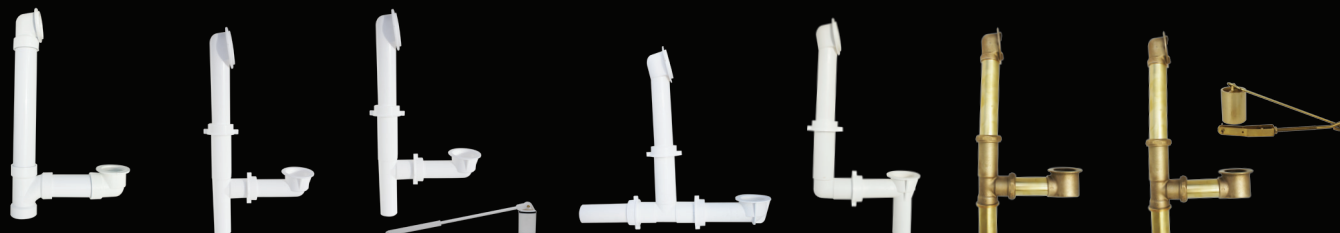
BW40RK1

BW40RK2

BW40DRK1

BW40DRK2

## BATH WASTE ROUGH-IN


BW40FRK1  
BW40FRK2

BWPFRK1

BWPFRK2

BWPFRK3

BWPFRK4

BW17FRK1

BW17FRK2

### BATH WASTE ROUGH-IN KIT LESS TRIM - SEE PAGE 16 FOR FINISHED BATH WASTE - NEW PRODUCT

PART #	DESCRIPTION
BW40RK1	1-1/2" Schedule 40 bath one hole waste kit w/ fittings less trim (contains one TE112 and one SE112)
BW40RK2	1-1/2" Schedule 40 bath two hole waste kit w/ fittings less trim (contains one TE112-2 and one SE112)
BW40DRK1	1-1/2" Schedule 40 bath one hole waste kit w/ direct drain fittings less trim (contains one TE112 and one SD112)
BW40DRK2	1-1/2" Schedule 40 bath two hole waste kit w/ direct drain fittings less trim (contains one TE112-2 and one SD112)
BW40FRK1	1-1/2" Schedule 40 full one hole bath waste kit w/ pipe and fittings less trim
BW40FRK2	1-1/2" Schedule 40 full two hole bath waste kit w/ pipe and fittings less trim
BWPFRK1	1-1/2" Plastic tubular kit less trim
BWPFRK2	1-1/2" Plastic tubular kit w/ plunger less trim
BWPFRK3	1-1/2" Plastic tubular above floor outlet kit less trim
BWPFRK4	1-1/2" Plastic tubular shoe outlet kit less trim
BW17FRK1	1-1/2" 17 gauge brass tubular kit less trim
BW17FRK2	1-1/2" 17 gauge brass tubular kit w/ plunger less trim



BWT1



BWT2



BWT3



BWT4

### BATH WASTE ROUGH-IN KITS WITH DRAIN BODY AND TEST KIT

PART #	DESCRIPTION
BWT1	1-1/2" Schedule 40 bath one hole waste kit w/ test
BWT2	Finishing trim kit for BWT1 w/ one hole faceplate and lift and turn drain stopper
BWT3	1-1/2" Schedule 40 bath two hole waste kit w/ test
BWT4	Finishing trim kit for BWT3 w/ two hole faceplate and lift and turn drain stopper

## BATH WASTE COMPONENTS



SE112



SD112



TE112



TE112-2



DT112



WOW



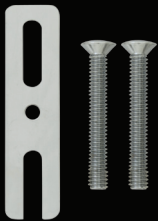
CWOW



WOSW



LTDW



OFPCB



TPOFP


TP38  
TP14


BLA



PLA



TDB112-114



TDB112-114-4

PART #	DESCRIPTION
SE112	1-1/2" Schedule 40 shoe elbow
SD112	1-1/2" Schedule 40 direct drain shoe
TE112	1-1/2" Schedule 40 one hole top elbow
TE112-2	1-1/2" Schedule 40 two hole top elbow
DT112	1-1/2" Schedule 40 directional tee
WOW	Overflow sponge rubber gasket
CWOW	Overflow channel rubber gasket
WOSW	Waste shoe rubber washer
LTDW	Washer for stopper on lift and turn drains (LTD112 and LTD114)
OFPCB	Overflow 2 to 1 hole conversion bar w/screws
TPOFP	Test plug for two hole faceplate
TP14	Test plug for one hole faceplate
TP38	Test plug for 3/8" stem drain
BLA	Brass Linkage Assembly for BTLW
PLA	Plastic Linkage Assembly for PTLW
TDB112-114	1-1/2" x 1-1/4" (1-3/8") brass tub drain conversion bushing
TDB112-114-4	1-1/2" x 1-1/4" (1-3/8") 4" height brass conversion bushing. Allows tub drain to fit thicker tubs.

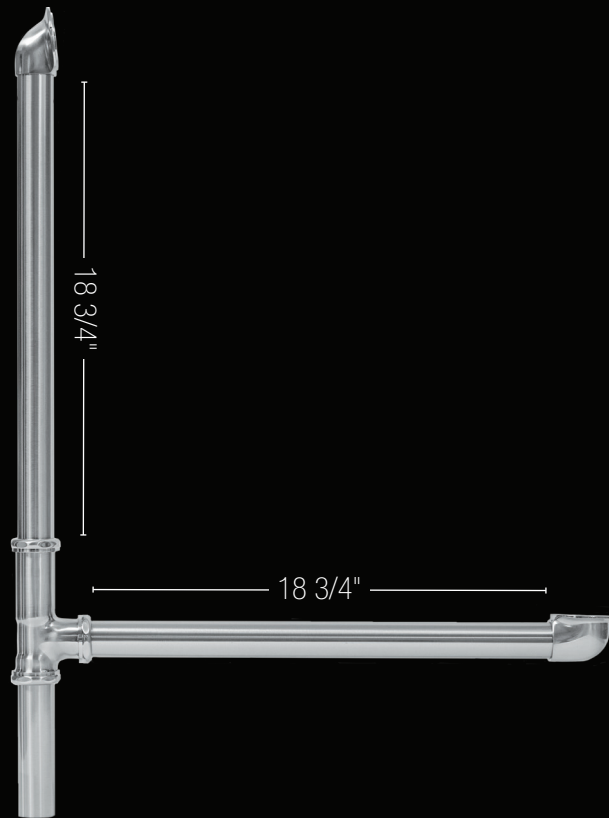


### NEW PRODUCT!

ADJUSTABLE IN THE FIELD. NO EXPOSED SCREWS.

#### BW17EKF (LESS TRIM)

1-1/2" 17 gauge brass bath waste for free standing tubs (less trim).  
All parts finished. Adjustable in the field. No exposed screws.



Available with the following trim

TRIM >>					
	LTWT1	FTWT	TTWT1	TTSWT	TTMWT
	1-Hole/Lift & Turn	Concealed/Flip	1-Hole/Toe Touch	Concealed/Squared	Concealed/Round
BATH WASTE WITH TRIM >>	BLTW1F	BFTWF	BTTW1F	BTTSWF	BTTMWF

### REPLACEMENT STRAINERS



RSSI



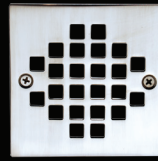
RSSI338



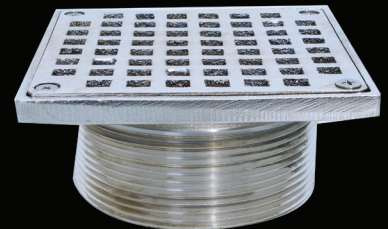
RSSI338-414



RSSS



RSSC338



MS312SSR5

PART #	DESCRIPTION	STRAINER OD	SCREW CENTERS	FITS DRAIN
RSSI	4-1/4" Round stamped screw-in strainer with screws	4-1/4"	2-5/8"	BDSD2-3, FSSD2, SWSSD2
RSSI338	4" Round stamped screw-in strainer with screws	4"	3-3/8"	BDSD2-3
RSSI338-414	4-1/4" Round stamped screw-in strainer with screws	4-1/4"	3-3/8"	BDSD2-3
RSSS	4-1/4" Round stamped snap-in strainer	4-1/4"	n/a	BNCS2, NCSD2, FSSD2
RSSC338	4-1/4" Square cast brass screw-in strainer with screws	4-1/4" x 4-1/4"	3-3/8"	BDSD2-3, FSSD2, SWSSD2
MS312SSR5	5" Square cast brass screw-in strainer with brass spud	5" x 5" (w/ ring)	Comes w/ spud	Any 3-1/2" spud connection

All screw-in strainers come with flat and self tapping screws

# SHOWER DRAINS



BDS2-3S



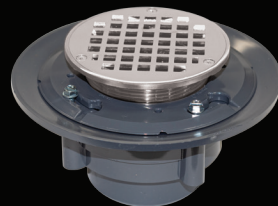
BDS2-3



BDS2-3BS



HDF2-6S



HDF2-6



SF2

## SHOWER DRAINS WITH BOLT DOWN CLAMPING RING FOR TILED SHOWERS

PART #	DESCRIPTION	FLOW RATE (APPROX)	STRAINER OD	CONNECTION	TRAP PRIMER OPTION	REPLACEMENT STRAINER
BDS2-3S	2" x 3" Grey PVC low profile w/spud/square cast strainer. Comes w/ test	3.5 GPM	4-1/4" x 4-1/4"	2" or 3" sch 40 DWV	no	RSSC338
BDS2-3	2" x 3" Grey PVC low profile w/ plastic spud/round stamped strainer. Comes w/ test	3.5 GPM	4-1/4"	2" or 3" sch 40 DWV	no	RSSI or RSSI338-414
BDS2-3BS	2" x 3" Grey PVC low profile w/ brass spud/square stamped strainer. w/ grouting ring. Comes w/ test	3.5 GPM	4-1/4" x 4-1/4"	2" or 3" sch 40 DWV	no	MS2SSR4 (with Spud)
HDF2-6S	3" x 4" Grey PVC high water volume w/ brass spud/square strainer w/ grouting ring	15.5 GPM	5" x 5"	3" or 4" sch 40 DWV	yes	MS312SSR5 (with spud)
HDF2-6	3" x 4" Grey PVC high water volume w/ brass spud/round strainer w/ grouting ring	15.5 GPM	6-1/8"	3" or 4" sch 40 DWV	yes	MS312RS5 (with spud)
SF2IPS	3" x 4" Cast iron w/ brass spud/square strainer w/ grouting ring	3.5 GPM	4-1/4" x 4-1/4"	2" IPS	no	MS2SSR4 (with spud)
SF2NH	3" x 4" Cast iron w/ brass spud/square strainer w/ grouting ring	3.5 GPM	4-1/4" x 4-1/4"	2" No Hub	no	MS2SSR4 (with spud)
SF2IC	3" x 4" Cast iron w/ brass spud/square strainer w/ grouting ring	3.5 GPM	4-1/4" x 4-1/4"	2" Inside Caulk	no	MS2SSR4 (with spud)



BN2



NC2



FS2



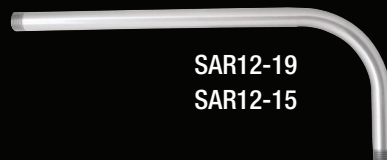
SW2

## SHOWER DRAINS FOR FIBERGLASS/ ACRYLIC SHOWERS

PART #	DESCRIPTION	FLOW RATE (APPROX)	STRAINER OD	CONNECTION	REPLACEMENT STRAINER
BN2	2" Brass no-caulk drain w/ finished snap-in strainer	3.5 GPM	4-1/4"	gasket on 2" DWV sch. 40	RSSS
NC2	2" PVC no-caulk drain w/ finished snap-in strainer	3.5 GPM	4-1/4"	gasket on 2" DWV sch. 40	RSSS
FS2	2" PVC drain with receptor base and finished screw-in strainer	3.5 GPM	4-1/4"	2" DWV sch. 40 solvent weld	RSSI
SW2	2" PVC drain with heavy nut and finished snap-in strainer	3.5 GPM	4-1/4"	2" DWV sch. 40 solvent weld	RSSS



SA12-6 &amp; SA12-8


SAR12-19  
SAR12-15

## WALL MOUNT SHOWER ARMS



SAS12-10



SAR12-1712



SAR12-18



SAR12-1912

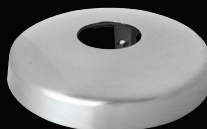


SARS12-17

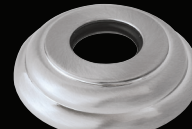
PART #	DESCRIPTION	IPS X LENGTH FROM WALL	HEIGHT FROM WALL CONNECTION
SA12-6	45 degree shower arm	1/2" x 6"	
SA12-6-F	Same as above w/ flange	1/2" x 6"	
SA12-8	45 degree shower arm	1/2" x 8"	
SA12-8-F	Same as above w/ flange	1/2" x 8"	
SAS12-10	S-style shower arm	1/2" x 7"	+10"
SAS12-10-F	Same as above w/ flange	1/2" x 7"	+10"
SAR12-15	90 Degree shower arm	1/2" x 15"	
SAR12-15-F	Same as above w/ flange	1/2" x 15"	
SAR12-19	90 Degree shower arm	1/2" x 19"	
SAR12-19-F	Same as above w/ flange	1/2" x 19"	
SAR12-1712	Raised bend shower arm	1/2" x 17-1/2"	
SAR12-1712-F	Same as above w/ flange	1/2" x 17-1/2"	
SAR12-18	Raised shower arm	1/2" x 18"	+6"
SAR12-18-F	Same as above w/ flange	1/2" x 18"	+6"
SAR12-1912	Raised shower arm	1/2" x 19-1/2"	+5"
SAR12-1912-F	Same as above w/ flange	1/2" x 19-1/2"	+5"
SARS12-17	Moderno™ Series square shower arm with flange	1/2" x 17"	

## SHOWER ARM FLANGES

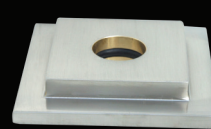
PART #	DESCRIPTION	MATERIAL
SAFS12	1/2" IPS x 2-1/2" OD round flange w/ set screw	Brass
SAF012	1/2" IPS x 2-1/2" OD round flange w/ O-ring	Heavy cast brass
SAF0S12	1/2" IPS x 3" OD square flange w/ O-ring	Heavy cast brass



SAFS12



SAF012



SAF0S12



## SHOWER HEADS



RSHD



RSHDS



RSHR



RSHS



MSSH1

PART #	DESCRIPTION	FACE DIAMETER	GPM W/ RESTRICTOR	MOUNTING
RSHD6	Dome Rain style w/ diverter*	6"	2.5	Straight
RSHD8	Dome Rain style w/ diverter*	8"	2.5	Straight
RSHD10	Dome Rain style w/ diverter*	10"	2.5	Straight
RSHDS10	Dome Rain style w/ diverter* and silicon sprays	10"	2.5	Straight
RSHD12	Dome Rain style less diverter*	12"	2.5	Straight
RSHDS12	Dome Rain style w/ diverter* and silicon sprays	12"	2.5	Straight
RSHR10	Moderno™ Series flat round rain style w/ diverter* and silicon sprays	10"	2.5	Straight / Angle
RSHR12	Moderno™ Series flat round rain style w/ diverter* and silicon sprays	12"	2.5	Straight / Angle
RSHS10	Moderno™ Series flat square rain style w/ diverter* and silicon sprays	10"	2.5	Straight / Angle
RSHS12	Moderno™ Series flat square rain style w/ diverter* and silicon sprays	12"	2.5	Straight / Angle
MSSH1	Multi-spray 5 setting shower head w/ diverter* and silicon sprays	3-1/2"	1.75	Angle

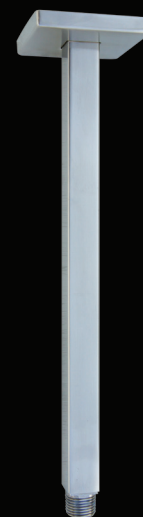
\*A diverter channels the water to each outlet hole.  
All shower heads come with a swivel to allow the shower head to be balanced for even flow.

## CEILING MOUNT BRASS SHOWER ARMS

PART #	SIZE X LENGTH	WITH FLANGE (SAF012)
TBN12-3	1/2" IPS x 3"	No
TBN12-3-F	1/2" IPS x 3"	Yes
TBN12-4	1/2" IPS x 4"	No
TBN12-4-F	1/2" IPS x 4"	Yes
TBN12-6	1/2" IPS x 6"	No
TBN12-6-F	1/2" IPS x 6"	Yes
TBN12-10	1/2" IPS x 10"	No
TBN12-10-F	1/2" IPS x 10"	Yes
TBN12-18	1/2" IPS x 18"	No
TBN12-18-F	1/2" IPS x 18"	Yes
TBN12-24	1/2" IPS x 24"	No
TBN12-24-F	1/2" IPS x 24"	Yes
TBN12-30	1/2" IPS x 30"	No
TBN12-30-F	1/2" IPS x 30"	Yes
SARSC12-12	Moderno™ Series 1/2" IPS x 12"	Yes as shown in picture



TBN12



SARSC12-12

Longer lengths and sizes available for special order. Call for inquiries.

UPDATE AND FACELIFT YOUR BATHROOM AT  
A FRACTION OF THE COST OF REMODELING.

## UNIVERSAL TRIM KITS

PART #	DESCRIPTION	INCLUDES
UTKTS	For tub and shower	Valve trim, 5 function 3-1/2" faced shower head, shower arm, flange and deluxe tub spout
UTKS	For shower only	Valve trim, 5 function 3-1/2" faced shower head, shower arm and flange

Will not fit 1) multi-handle tub and showers 2) Showers w/ volume and temperature control.

### Fits the following eight valves:

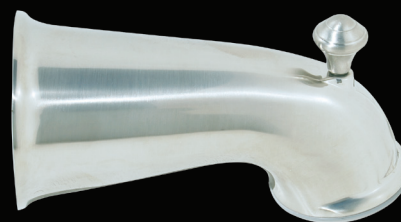
Delta\*: 600 series (diamond stem and round stem) and Monitor

Moen\*: Posi-Temp, Moentrol and Standard valves

Price Pfister\*: Bodyguard and Standard valves



Multi-spray feature



Tub spout comes with UTKTS kit only  
Universal connection.

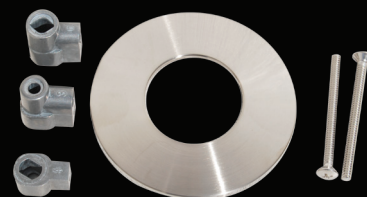
Fits: 1/2" IPS/CTS/PEX at nose end  
and 3/4" IPS, 1/2" IPS/CTS/PEX at wall end



Parts to fit Delta\* Monitor and 600 Series  
(Diamond and Round Stem) Valves



Parts to fit Moen\* Moentrol\*, Posi-Temp\*,  
and Standard\* Valves



Parts to fit Price Pfister\* Bodyguard and  
Standard\* Valves

*\*Manufacturers' names are used only to describe whose products Waternity products will fit. They are not O.E.M. manufactured, licensed or endorsed by those manufacturers.*



## DEEP BOX FLANGES

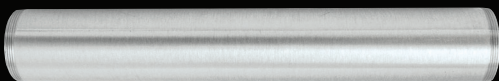
PART #	DESCRIPTION
DBF0114	1-1/4" OD deep box flange
DBF0112	1-1/2" OD deep box flange

## BRASS SLIP JOINT (ONE END) EXTENSION TUBES



PART #	TUBULAR OD X LENGTH	GAUGE
BETOE114-8	1-1/4" x 8"	17
BETOE114-12	1-1/4" x 12"	17
BETOE8	1-1/2" x 8"	17
BETOE12	1-1/2" x 12"	17

## BRASS THREADED (BOTH ENDS) TAILPIECES



PART #	TUBULAR OD X LENGTH	GAUGE
BDTST114-8	1-1/4" x 8"	17
BDTST114-12	1-1/4" x 12"	17

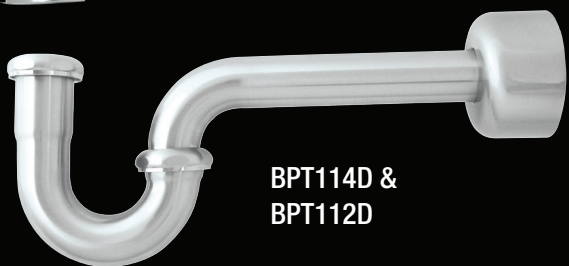
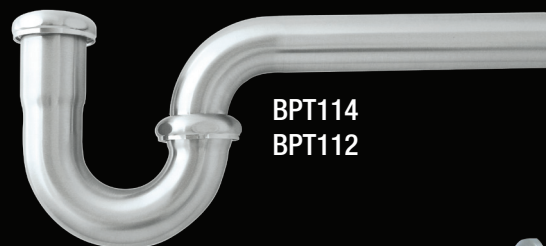
# LAVATORY TRAPS AND FLANGES



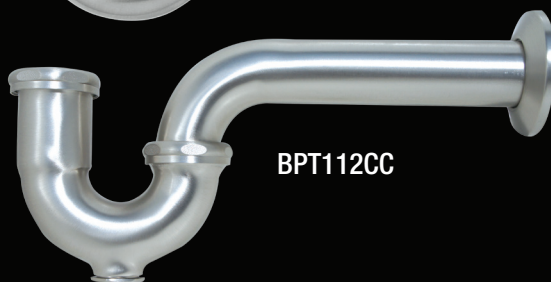
BBTR114



BBTS114


BPT114D &  
BPT112D

BPT114  
BPT112


PT112



BPT112CC

6.75"



BST112

19.5"

PART #	DESCRIPTION	OD TUBULAR	DRAIN TO WALL	GAUGE	CERTIFICATIONS
BBTR114	Moderno™ Series round trap w/ flange	1-1/4" Brass	13"	Semi Cast/17	cUPC and CSA
BBTS114	Moderno™ Series square trap w/ flange	1-1/4" Brass	13"	Semi Cast/17	cUPC and CSA
BPT114D	P-trap w/ deep box flange	1-1/4" Brass	12"	17	
BPT114	P-trap less flange	1-1/4" Brass	12"	17	
BPT112D*	P-trap w/ deep box flange	1-1/2" Brass	10.5"	17	
BPT112	P-trap less flange	1-1/2" Brass	10.5"	17	
PT112*	P-trap w/ deep box flange	1-1/2" Plastic	11"	N/A	
BPT112CC*	P-trap w/ cleanout and flange	1-1/2" Brass	10.5"	Semi Cast/17	
BST112*	S-trap w/ deep box flange	1-1/2" Brass		17	

\*1-1/2 tubular comes w/ 1-1/4" reducing washer

All traps come with solid brass nuts



## LAVATORY SUPPLY KITS

\*lead free

## ALL KITS INCLUDE:

2 pcs- All brass valve\*

2 pcs- Corrugated copper line w/ brass nut  
(1/2" IPS)\*

2 pcs- 5/8" OD Escutcheon (flange)

## ALL KITS ARE:

\*Lead Free ANSI/NSF 372 compliant

\*Meets Lead Free Section 1417 (d) of Safe Water Drinking Act

\*UPC &amp; AB1953 Certified

\*Meets ASME A112.181.1/CSA B125-2011 Specifications


SKL058-038-20Q  
SKL12-038-20Q

SKL058-038-20QX  
SKL12-038-20QX

PART#	VALVE*	VALVE INLET X OUTLET	SUPPLY LINE* (OD X LENGTH)
<b>ANGLE:</b>			
SKL058-038-20Q	Angle quarter turn w/ round handle	5/8" OD (1/2" CTS) X 3/8" OD	3/8" X 20"
SKL058-038-20QX	Angle quarter turn w/ cross handle	5/8" OD (1/2" CTS) X 3/8" OD	3/8" X 20"
SKL12-038-20Q	Angle quarter turn w/ round handle	1/2" IPS X 3/8" OD	3/8" X 20"
SKL12-038-20QX	Angle quarter turn w/ cross handle	1/2" IPS X 3/8" OD	3/8" X 20"

Add "N" to end of part number to add 1/2" x 4" nipple (TBN12-4)


SSKL058-038-20Q  
SSKL12-038-20Q

SSKL058-038-20QX  
SSKL12-038-20QX

PART#	VALVE*	VALVE INLET X OUTLET	SUPPLY LINE* (OD X LENGTH)
<b>STRAIGHT:</b>			
SSKL058-038-20Q	Straight quarter turn w/ round handle	5/8" OD (1/2" CTS) X 3/8" OD	3/8" X 20"
SSKL058-038-20QX	Straight quarter turn w/ cross handle	5/8" OD (1/2" CTS) X 3/8" OD	3/8" X 20"
SSKL12-038-20Q	Straight quarter turn w/ round handle	1/2" IPS X 3/8" OD	3/8" X 20"
SSKL12-038-20QX	Straight quarter turn w/ cross handle	1/2" IPS X 3/8" OD	3/8" X 20"

Add "N" to end of part number to add 1/2" x 4" nipple (TBN12-4)

### CLOSET SUPPLY KITS

#### ALL KITS INCLUDE:

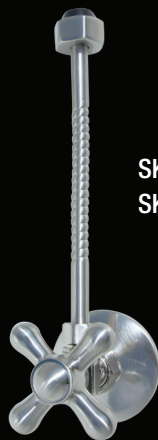
- 1 pc- All brass valve
- 1 pc- Corrugated copper supply line w/ brass nut (7/8" ballcock)
- 1 pc- 5/8" OD (1/2" CTS) Escutcheon (flange)

#### QUARTER TURN SUPPLY KITS ARE:

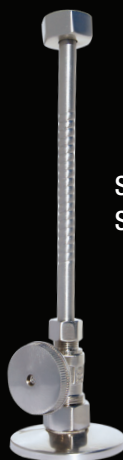
- \* Lead Free ANSI/NSF 372 compliant
- \* Meets Lead Free Section 1417 (d) of Safe Water Drinking Act
- \* UPC & AB1953 Certified
- \* Meets ASME A112.181.1/CSA B125-2011 Specifications



SKC058-038-20  
SKC058-038-20Q  
SKC12-038-20  
SKC12-038-20Q



SKC058-038-20QX  
SKC12-038-20QX



SSKC058-038-20Q  
SSKC12-038-20Q



SSKC058-038-20QX  
SSKC12-038-20QX

PART#	VALVE	VALVE INLET X OUTLET	SUPPLY LINE (OD X LENGTH)	LEAD FREE*
<b>ANGLE:</b>				
SKC058-038-20Q	Angle quarter turn w/ round handle	5/8" OD (1/2" CTS) X 3/8" OD	3/8" X 20"	Yes
SKC058-038-20QX	Angle quarter turn w/ cross handle	5/8" OD (1/2" CTS) X 3/8" OD	3/8" X 20"	Yes
SKC12-038-20Q	Angle quarter turn w/ round handle	1/2" IPS X 3/8" OD	3/8" X 20"	Yes
SKC12-038-20QX	Angle quarter turn w/ cross handle	1/2" IPS X 3/8" OD	3/8" X 20"	Yes
<b>STRAIGHT:</b>				
SSKC058-038-20Q	Straight quarter turn w/ round handle	5/8" OD (1/2" CTS) X 3/8" OD	3/8" X 20"	Yes
SSKC058-038-20QX	Straight quarter turn w/ cross handle	5/8" OD (1/2" CTS) X 3/8" OD	3/8" X 20"	Yes
SSKC12-038-20Q	Straight quarter turn w/ round handle	1/2" IPS X 3/8" OD	3/8" X 20"	Yes
SSKC12-038-20QX	Straight quarter turn w/ cross handle	1/2" IPS X 3/8" OD	3/8" X 20"	Yes

Add "N" to end of part number to add 1/2" x 4" nipple (TBN12-4)

## SUPPLY STOP VALVES



AS058-038Q  
AS12-038Q



AS058-038QX  
AS12-038QX



SS058-038Q  
SS12-038Q



SS058-038QX  
SS12-038QX

## SUPPLY STOP VALVES FOR LAVATORY OR CLOSET

PART #	DIRECTION	OPERATION	INLET X OUTLET	HANDLE	LEAD FREE*	CUPC CERT**	MEETS SPEC***
AS058-038Q	Angle	Quarter Turn	5/8" OD (1/2" CTS) x 3/8" OD	Round	Yes	Yes	Yes
AS058-038QX	Angle	Quarter Turn	5/8" OD (1/2" CTS) x 3/8" OD	Cross	Yes	Yes	Yes
AS12-038Q	Angle	Quarter Turn	1/2" IPS x 3/8" OD	Round	Yes	Yes	Yes
AS12-038QX	Angle	Quarter Turn	1/2" IPS x 3/8" OD	Cross	Yes	Yes	Yes
SS058-038Q	Straight	Quarter Turn	5/8" OD (1/2" CTS) x 3/8" OD	Round	Yes	Yes	Yes
SS058-038QX	Straight	Quarter Turn	5/8" OD (1/2" CTS) x 3/8" OD	Cross	Yes	Yes	Yes
SS12-038Q	Straight	Quarter Turn	1/2" IPS x 3/8" OD	Round	Yes	Yes	Yes
SS12-038QX	Straight	Quarter Turn	1/2" IPS x 3/8" OD	Cross	Yes	Yes	Yes

\* Meets Lead Free Section 1417 (d) of Safe Water Drinking Act

\*\*cUPC & AB1953 Certified

\*\*\* Meets ASME A112.181.1/CSA B125-2011 Specifications

## SUPPLY RISERS/FLANGES



FCRC3-20C DETAIL



FLRC3-20C/FLRC3-36C DETAIL



FCRC3-20C , FLRC3-20C &amp; FLRC3-36C

4" corrugation to aid  
in ease of installation

## RISERS

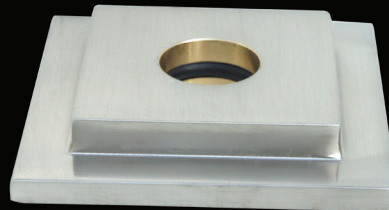
PART #	DESCRIPTION	OD X LENGTH	LEAD FREE
FCRC3-20C	Corrugated closet riser with 7/8" OD ballcock nut and rubber cone washer	3/8" OD x 20"	Yes
FLRC3-20C	Corrugated closet riser with 1/2" IPS nut and rubber cone washer	3/8" OD x 20"	Yes
FLRC3-36C	Corrugated closet riser with 1/2" IPS nut and rubber cone washer	3/8" OD x 36"	Yes



LPF058, LPF12



SAF012



SAF0S12



CC12-312

## SUPPLY STOP FLANGES

PART #	DESCRIPTION	OUTSIDE DIAMETER
LPF058	5/8" OD (1/2" CTS) round escutcheon	2-1/2"
LPF12	1/2" IPS round escutcheon	2-1/2"
SAF012	1/2" IPS round three step solid cast brass flange w/ O-ring	2-1/2"
SAF0S12	1/2" IPS Moderno Series square three step solid cast brass flange w/ O-ring	3" x 3"
CC12-312	1/2" ID x 3 1/2" length cover casing	





## WATER DISPENSER

**DWF**

Drinking water fountain for cold water only- 8" spout height. Lead free.

## SINK SPRAY



## SINK SPRAY

**KSHS**

European-style kitchen sink spray, hose and guide.



## DISPENSERS

**LSDM**

Liquid soap dispenser- solid brass.

**LSDEK**

3" extension kit for installation on thick counter tops.



**ASBU**



**ASB  
ASBE**



**ASBS**



## DISHWASHER AIR GAP

**DAG**

Dishwasher air gap with cover.

**DAGC**

Cover only less air gap

## AIR SWITCHES

**ASBU**

Air switch base unit with dual outlets for garbage disposals/jetted tubs.

**ASB**

Air switch button for garbage disposals/jetted tubs. Fits up to 1-1/2" deck.

**ASBS**

Moderno™ Series square air switch button for garbage disposals/jetted tubs. Fits up to 1-1/2" deck.

**ASK**

Air switch kit that includes base unit (ASBU) and round button (ASB)

**ASKS**

Air switch kit that includes base unit (ASBU) and square button (ASBS)

**ASBE**

Air switch button with 3-5/8" extended threads

**ASKE**

Air switch kit that includes base unit (ASBU) and round button with 3-5/8" extended threads (ASBE)

## FAUCET HOLE COVER

**FHCH2**

2" OD brass faucet hole cover.



WATERNITY®

# KITCHEN

## DESIGNER STYLE DUO BASKET STAINERS AND DISPOSAL TRIM FINISHES



**AL**  
Almond



**BI**  
Biscuit



**BL**  
Black



**MAL**  
Matte Almond



**MBI**  
Matte Biscuit



**MBL**  
Matte Black



**MMO**  
Matte Mocha



**MWH**  
Matte White



**WH**  
White



**AC**  
Aged Copper



**CP**  
Chrome Plated



**OB**  
Oil Rubbed Bronze



**PB**  
PVD Polished Brass



**SN**  
Satin Nickel



**SS**  
Stainless Steel

### SINK MANUFACTURER COLOR CROSS REFERENCE

WATERNITY	BLANCO*	ELKAY*	KOHLER*	SWANSTONE*
Matte Almond (-MAL)	Biscotti	Bisque		Bone, Caraway Seed, Cloud Bone, Pebble, Granito
Matte Biscuit (-MBI)	Biscuit			Bisque, Glacier, Tahiti Ivory
Matte Black (-MBL)	Anthracite	Black	Caviar (FP)	Black Galaxy
Matte Mocha (-MMO)	Cafe Brown	Mocha	Black 'n Tan (KA)	Acorn, Espresso
Matte White (-MWH)	White	White	Honed White (HW1), Sea Salt (FF)	Tahiti White, White
Almond (-AL)			Cane Sugar (FD), Boucle' Tweed (HV)	
Biscuit (-BI)			Biscuit (96), Boucle' Muslin (HW)	
Black (-BL)			Black Black (07)	
White (-WH)			White (0)	

Add "C" to the end of the part number for point of purchase clamshell packaging. (ie DSDBSM-SN-C)  
 Finishes are similar and complimentary to sink colors but not an exact match.  
 Matte finishes are made to match non-shiny surfaces such as honed granite and composite finishes.  
 Non-Matte finishes are made to match cast iron sinks with clear shiny coating.



DSDBSM



DSDBS

## DESIGNER SERIES DUO BASKET STRAINER DISPOSAL FLANGES



DSEB



DSDFSM

DSDFS  
DSDFS\*

DSDFSMW

DUO BASKET STRAINERS			
PART#	DESCRIPTION	SINK THICKNESS	TRIM MATERIAL
DSDBSM	Metal duo basket strainer with threaded rod	Up to 5/8"	Stainless Steel
DSDBSMRB	Replacement basket for DSDBSM		Stainless Steel
DSDBS	Celcon duo basket strainer with threaded rod	Up to 5/8"	Celcon Plastic
DSDBSRB	Replacement basket for DSDBS		Celcon Plastic
DSEB	Extension bolt for DSDBSM and DSDBS to fit sinks up to 2-3/4"	Up to 2-3/4"	

DISPOSAL FLANGES AND STRAINERS/ STOPPERS			
PART#	DESCRIPTION	FITS	TRIM MATERIAL
DSDFSM	Metal disposal flange and removable stopper/strainer	InSinkErator*	Stainless Steel
DSDFSMRB	Replacement disposal stopper/strainer for DSDFSM		Stainless Steel
DSDFS	Celcon snap-in** disposal flange removable stopper/strainer	InSinkErator*	Celcon Plastic
DSDFS RB	Replacement disposal stopper/strainer for DSDFS		Celcon Plastic
DSDFS*	Celcon snap-in** disposal flange removable stopper/strainer	Waste King* 3-bolt	Celcon Plastic
DSDFSMW*	Metal disposal flange and removable stopper/strainer	Waste King* 3-bolt	Stainless Steel

Add "C" to the end of the part number for point of purchase clamshell packaging. (ie DSDBSM-SN-C)

\*Fits Waste King 3 bolt metal disposals only

\*\*Trim snaps in over the existing metal flange

\*\*\*Manufacturers' names listed is used only to describe whose products Waternity products will fit. They are not O.E.M. manufactured, licensed or endorsed by those manufacturers.

## DISPOSAL TRIM FOR IN-SINK-ERATOR®\*



GDFSKM



GDFDSKM



GDFM



GDSM



GDFSKM-SCO



GDFSKM2

## IN-SINK-ERATOR®\*

PART #	DESCRIPTION	FITS	TRIM MATERIAL
GDFSKM	Disposal flange and stopper	InSinkErator®	Stainless Steel
GDFDSKM	Disposal flange and stopper for thick sinks 2-1/2" height	InSinkErator®	Stainless Steel
GDFM	Disposal flange only	InSinkErator®	Stainless Steel
GDSM	Disposal stopper only	InSinkErator®	Stainless Steel
GDFSKM-SCO**	Disposal flange and stopper- Solid Copper	InSinkErator®	Solid Copper
GDFSKM2	Disposal flange and strainer/stopper. Used with matching DBSD	InSinkErator®	Stainless Steel

Add "C" at the end of the part number for point of purchase clamshell packaging. (ie. GDFSKM-SN-C). Clamshell not available for GDFDSKM.

\*Manufacturer name listed is used only to describe whose products Waternity products will fit. They are not O.E.M. manufactured, licensed or endorsed by this manufacturer.

\*\*Solid copper GDFSKM-SCO is made to be installed with copper sinks. The copper will patina just like the copper sink.



## DUO BASKET STRAINERS



DBSM



SSBS



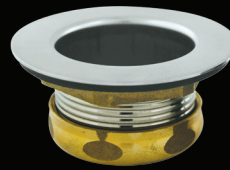
DBSD



DBSD-SCO



DBS



JDBS



DJDBS

## KITCHEN SINK DUO BASKET STRAINERS

PART #	DESCRIPTION	STRAINER DESCRIPTION	BODY MATERIAL	SINK THICKNESS
DBSM	Heavy brass duo basket strainer w/ brass nut	Heavy brass w/ O-ring seal	Brass	Up to 1-1/4"
DBSMRB	Replacement basket for above	Heavy brass w/ O-ring seal	Brass	n/a
SSBS	Brass spin and seal duo basket strainer w/ brass nut	Brass w/ compression seal	Brass	Up to 1-1/4"
SSBSRB	Replacement basket for above	Brass w/ compression seal	Brass	n/a
DBSD	Duo basket strainer w/ metal trim, thrd rod, plastic cup and nut	S.S. w/ stick post/ friction ball	Stainless steel	Up to 2"
DBSDRB	Replacement basket for above	S.S. w/ stick post/ friction ball	Stainless steel	n/a
DBSD-SCO*	Duo basket strainer w/ metal trim, thrd rod, plastic cup and nut	Solid copper w/ stick post/ friction ball	Solid Copper	Up to 2"
DBS	Celcon basket strainer w/ threaded rod, plastic cup and nut	Celcon w/ stick post	Celcon (plastic)	Up to 1"
DBSRB	Replacement basket for above	Celcon w/ stick post	Celcon (plastic)	n/a

## JUNIOR DUO BAR STRAINERS

PART #	DESCRIPTION	STRAINER DESCRIPTION	BODY MATERIAL	SINK THICKNESS
JDBS	Junior duo brass basket strainer w/ brass nut	Brass w/ rubber seal	Brass	Up to 1/4"
DJDBS	Deep junior duo brass basket strainer w/ brass nut	Brass	Brass	Up to 1-1/2"

Add "C" at the end of the part number for point of purchase clamshell packaging for DBSM, SSBS, DBSD and DBS. (ie. DBSM-SN-C)

Kitchen sink duo basket strainers fit a 3-1/2" opening

\*Solid copper (DBSD-SCO) was made to be installed with copper sinks. The copper will patina just like the copper sink.

Bar strainers fit a 2" opening



WATERNITY®

1417 COMMERCE BLVD. | ANNISTON, ALABAMA | 36207  
TEL.: (866) 749-8329 FAX: (800) 749-8329

[waternity.com](http://waternity.com)